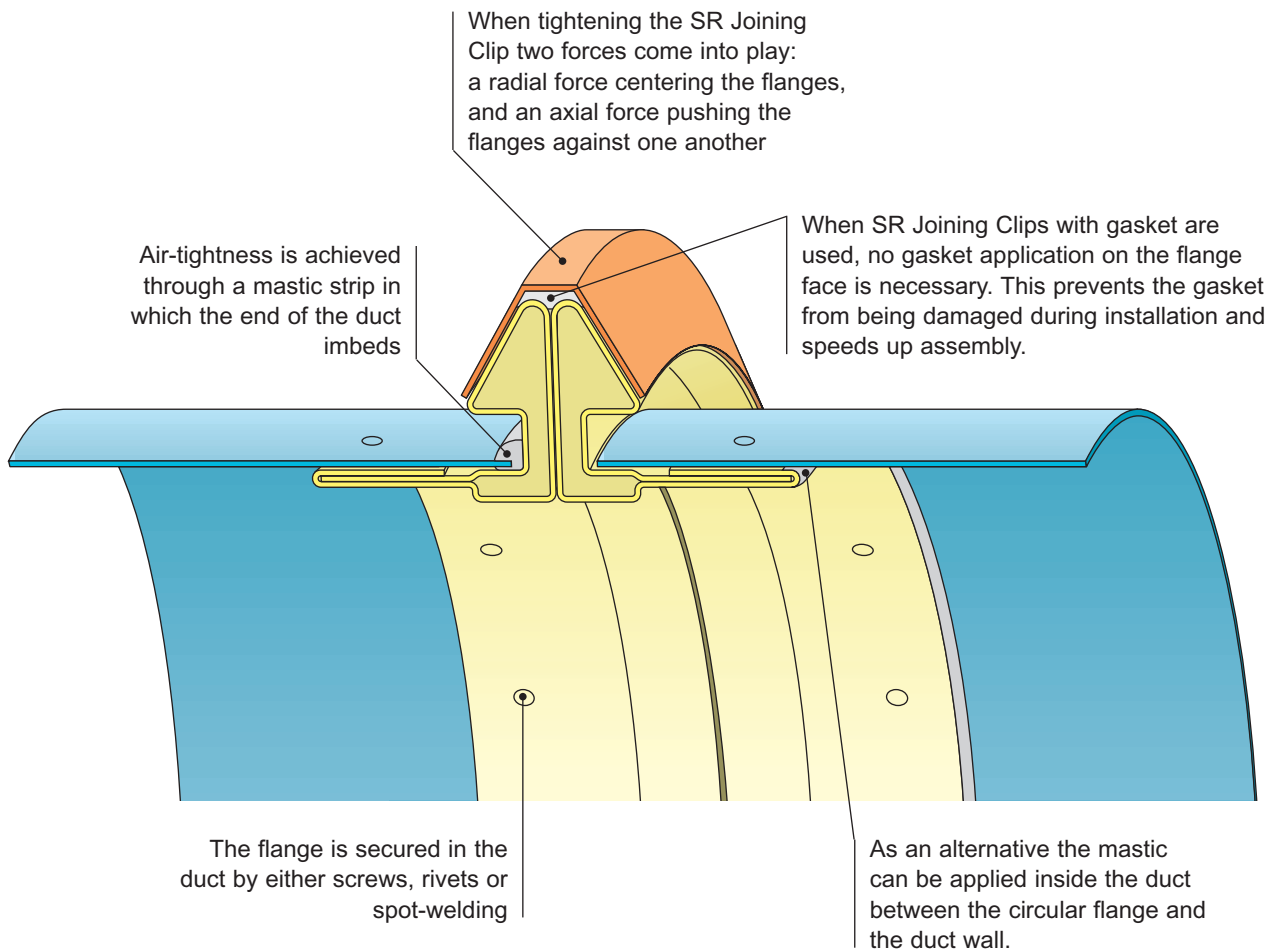




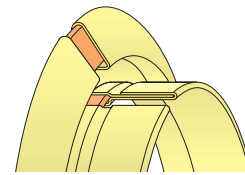
- **Connection for circular ducts with reinforcing beads or ribs.**
- **Very good air-tightness since the duct wall penetrates into the sealer.**
- **Also suitable for inaccurate duct-Ø.**
- **The flange is secured onto the duct by screws, rivets or spot-welding.**
- **SR Joining Clips are used to assemble the ducts.**
- **For duct-Ø 200 up to 3000 mm.**



ADVANTAGES

Patented telescope technique:

A special connecting part maintains the stability of the flange and provides support to the mastic even if the flange ends are pulled apart due to inaccurate duct-Ø.



Economic assembly:

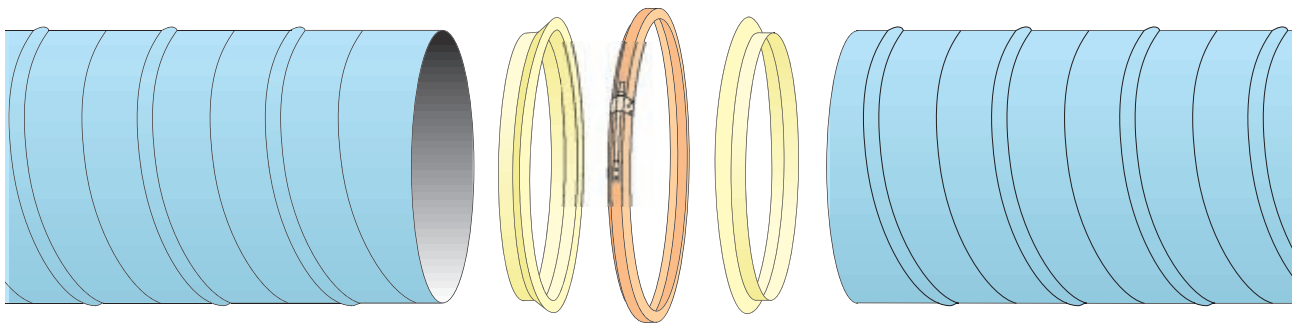
The duct sections are assembled very quickly thanks to a SR Joining Clip (more information on catalog pages 41).

Air-tightness:

The duct end penetrates into the mastic strip without any interruptions thus providing an air-tight connection fulfilling the Eurovent Class C requirements even if the duct has stiffening ribs or beads.

FEATURES

One connection is made of:



two UF Circular Flanges and one SR Joining Clip

Suitable for: stiffening ribs spirally wound straight seam			duct-Ø 200 to 3000 mm	Not suitable for: turned out edge fittings with turned out edge	
--	--	--	---------------------------------	--	--

Dimensions:
(galvanized version)

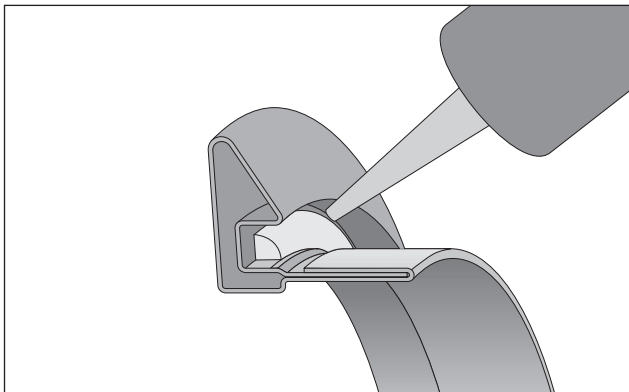
There are three UF Circular Flange profile sizes:

Circular Flange	duct-Ø	A	B	C	D	E	F	G	H
UF 20 - 45	200 - 499 mm	16,4	3,4	0,60	20,6	24,0	1,80	1,60	4,0
UF 50 - 90	500 - 999 mm	26,5	4,2	0,75	27,8	32,0	2,25	1,95	7,3
UF 100 - 160	1000 - 3000 mm	37,1	5,2	1,00	40,8	46,0	3,00	2,20	8,9

Important: The profile shape and dimensions described above are only valid for UF Circular Flanges in galvanized steel. The shape and dimensions of UF Circular Flanges made of stainless steel are different and can be found in the "Additional Information" section on page 154.

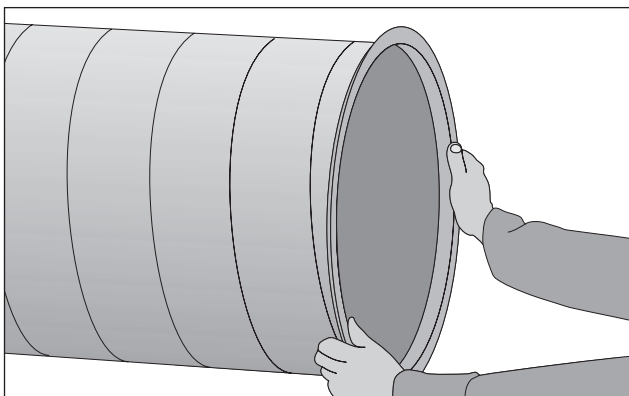
INSTRUCTIONS

1. Mastic application:



Before fitting the UF Circular Flange into the duct, apply a mastic strip into its pocket as depicted.

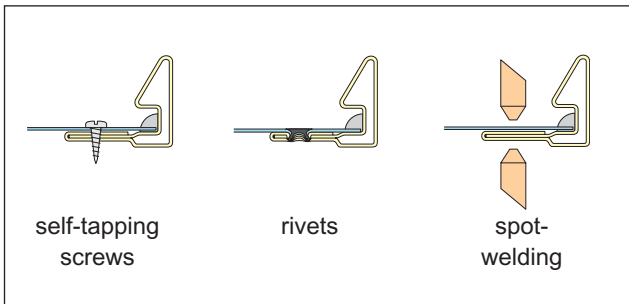
2. Fitting the flange:



Insert the UF Circular Flange into the duct until the duct wall penetrates into the sealing strip.

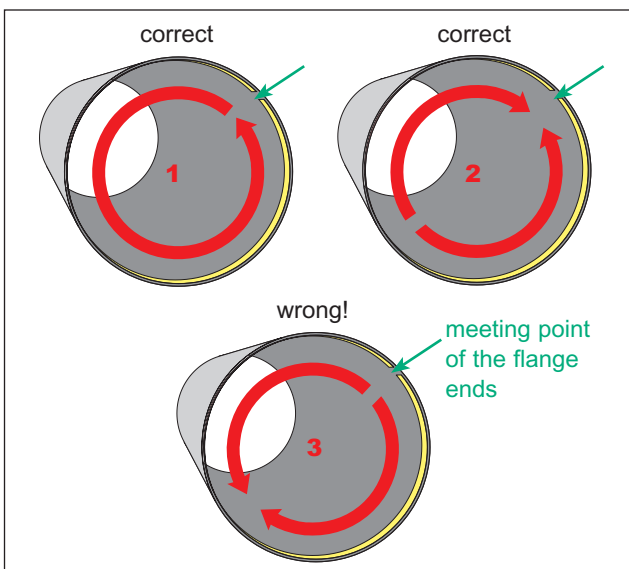
A rubber hammer is useful to accomplish this job.

3. Fixing the flange:



You have the choice between fixing the flange by screws, rivets or spot-welding.

The distance between the fixing points should normally be 100 mm. For increased load-bearing capacities the intervals should be reduced to 50 mm.

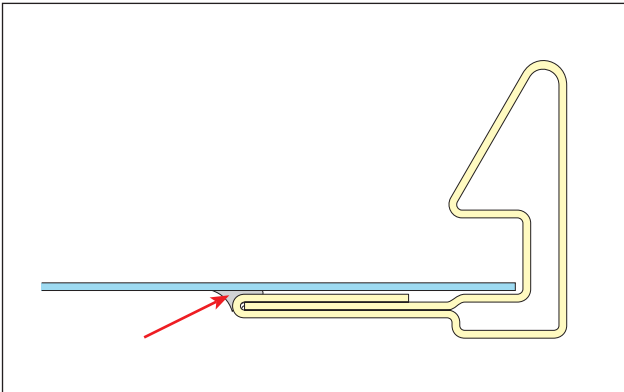


When fixing, start either at the meeting point of the flange ends and work around (1) or at the opposite point of the flange ends (2).

If you start by fixing both flange ends first, the duct may become wavy (3)!

INSTRUCTIONS

4. Alternative mastic location:



An alternative to obtain an air-tight connection is to apply mastic inside the duct between the flange and the duct wall as depicted (not recommended for small duct-Ø).

INSTALLATION

Please refer to catalog page 41 “SR Joining Clips”.

DESIGNATION

UF Circular Flanges (galvanized steel)		
Art.No.	Description	for duct-Ø
B04A-1001	UF 20 galv	200 mm
B04A-1002	UF 22 galv	224 mm
B04A-1003	UF 25 galv	250 mm
B04A-1004	UF 28 galv	280 mm
B04A-1005	UF 30 galv	300 mm
B04A-1006	UF 31 galv	315 mm
B04A-1007	UF 35 galv	355 mm
B04A-1008	UF 40 galv	400 mm
B04A-1009	UF 45 galv	450 mm
B04A-1010	UF 50 galv	500 mm
B04A-1011	UF 56 galv	560 mm
B04A-1012	UF 60 galv	600 mm
B04A-1013	UF 63 galv	630 mm
B04A-1014	UF 71 galv	710 mm
B04A-1015	UF 80 galv	800 mm
B04A-1016	UF 90 galv	900 mm
B04A-1017	UF 100 galv	1000 mm
B04A-1018	UF 112 galv	1120 mm
B04A-1019	UF 125 galv	1250 mm
B04A-1020	UF 140 galv	1400 mm
B04A-1021	UF 160 galv	1600 mm

UF Circular Flanges (stainless steel)		
Art.No.	Description	for duct-Ø
B04B-1001	UF 20 V2A	200 mm
B04B-1002	UF 22 V2A	224 mm
B04B-1003	UF 25 V2A	250 mm
B04B-1004	UF 28 V2A	280 mm
B04B-1005	UF 30 V2A	300 mm
B04B-1006	UF 31 V2A	315 mm
B04B-1007	UF 35 V2A	355 mm
B04B-1008	UF 40 V2A	400 mm
B04B-1009	UF 45 V2A	450 mm
B04B-1010	UF 50 V2A	500 mm
B04B-1011	UF 56 V2A	560 mm
B04B-1012	UF 60 V2A	600 mm
B04B-1013	UF 63 V2A	630 mm
B04B-1014	UF 71 V2A	710 mm
B04B-1015	UF 80 V2A	800 mm
B04B-1016	UF 90 V2A	900 mm
B04B-1017	UF 100 V2A	1000 mm
B04B-1018	UF 112 V2A	1120 mm
B04B-1019	UF 125 V2A	1250 mm
B04B-1020	UF 140 V2A	1400 mm
B04B-1021	UF 160 V2A	1600 mm

For one connection you need 2 UF Circular Flanges and 1 SR Joining Clip. You will find the corresponding SR Joining Clips on catalog page 41.

All intermediate sizes from 200 to 3000 mm Ø are also available.