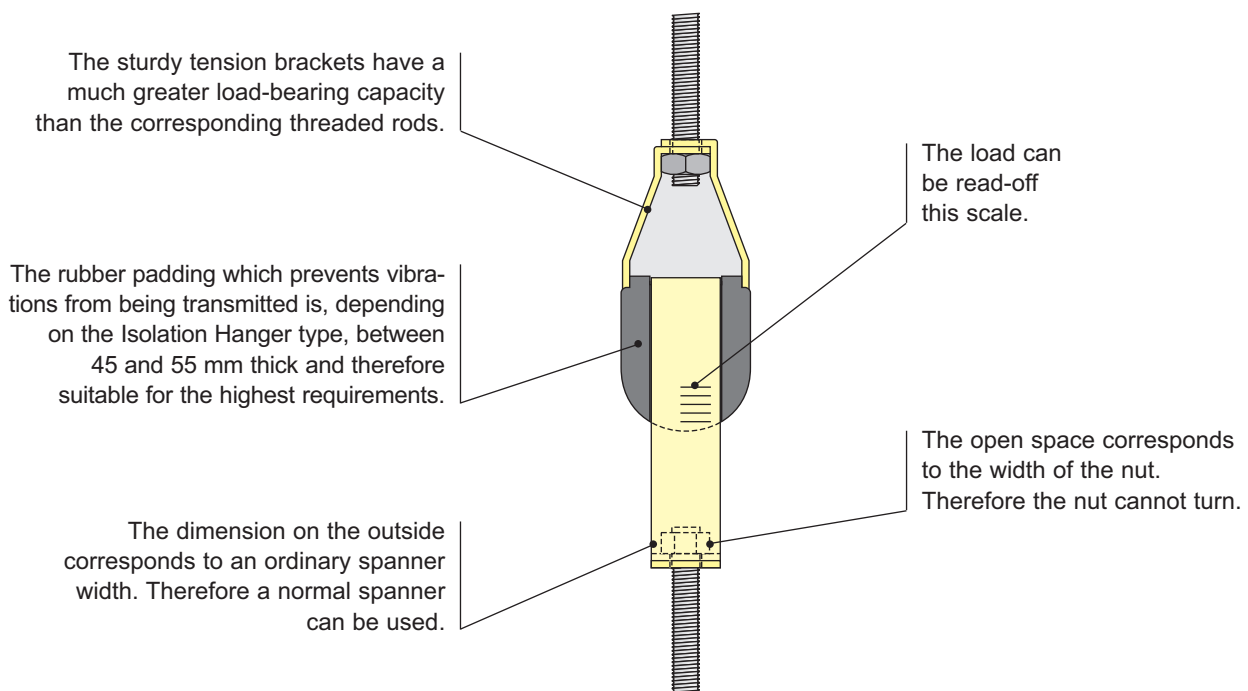




- For the sound isolated suspension of ductwork and equipment with M8, M10 and M12 threaded rods.
- A large piece of rubber is placed between two sturdy tension brackets.
- Even if the rubber is damaged (for example through a fire), the suspension will not break down.
- The load strain can be read-off on a scale and, thus, the load-bearing capacity of the hanger can be used to its full extent.



## LOAD-BEARING CAPACITY AND DIMENSIONS

Type	Loading capacity*	Threaded rod	Overall length	max. width	Rubber thickness
SI M8	1300 N	M8	140 mm	40 x 40 mm	45 mm
SI M10	1700 N	M10	150 mm	45 x 45 mm	50 mm
SI M12	2000 N	M12	160 mm	50 x 50 mm	55 mm



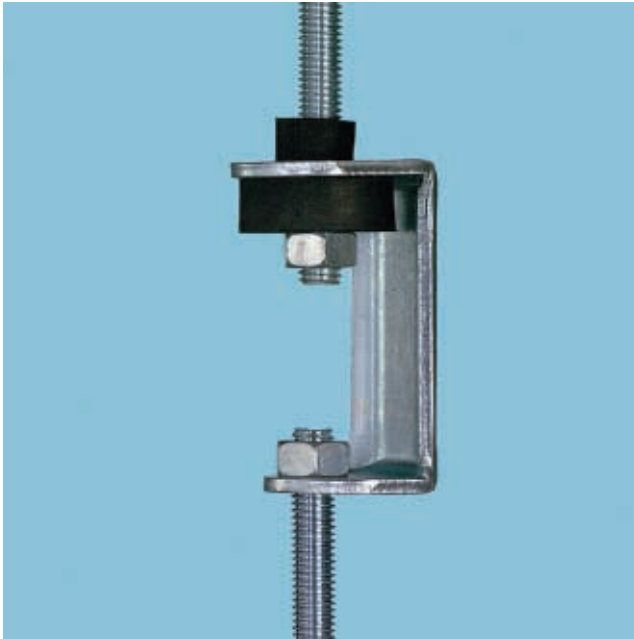
\* The indicated maximum load-bearing capacity is in accordance with the European Norm EN 12236 (draft) and can therefore be used integrally. The breaking load is three times higher.

## DESIGNATION

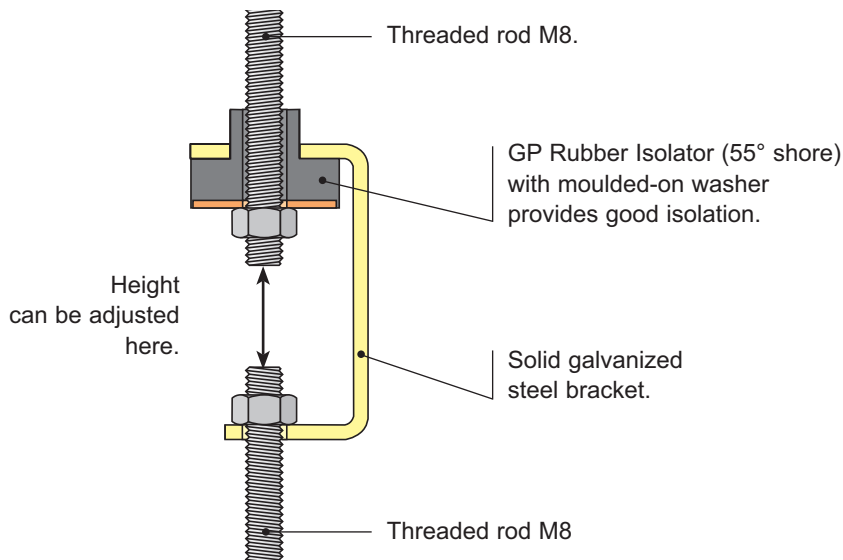
Art.No.	Description	for threaded rod
F02V-1001	SI M8	M8
F02V-1002	SI M10	M10
F02V-1003	SI M12	M12



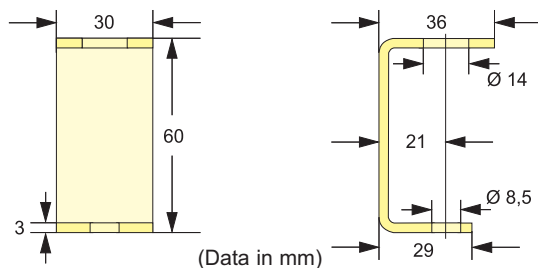
Additional information concerning the rubber parts for the Isolation Hangers can be found on pages 150 and 151.



- **For the sound isolated suspension of ductwork and equipment with M8 threaded rods.**
- **Does not require much space.**
- **The height of the suspension can be easily adjusted during installation.**



## DIMENSIONS



## DESIGNATION AND LOAD BEARING CAPACITY

Art.No.	Description	isolated with	load bearing capacity*
F02V-1004	SD M8	Rubber Isolator GP M8	400 N



\* The indicated maximum load-bearing capacity is in accordance with the European Norm EN 12236 (draft) and can therefore be used integrally. The breaking load is three times higher.

Details concerning the characteristics of GP Rubber Isolators can be found on page 124.