



## HOTCHKISS AIR SUPPLY

Heating, Ventilating & Air Movement Equipment



T D B   A c c e s s   D o o r s



## Description

A range of high quality pressed galvanised steel duct access doors manufactured in the UK by Hotchkiss Air Supply.

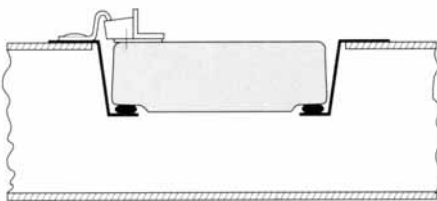
## Special Features

- Choice of four ergonomic sizes to suit most applications
- Suitable for high, medium and low pressure systems
- Suitable for plain and insulated ductwork
- Double skin door encapsulating a fire retardant thermal and acoustic insulation
- Seamless one piece mounting frame with pre-punched inner flange for easy installation
- One piece high compression, positive seal gasket
- Progressive camlock fasteners
- Safety chain fitted as standard
- Hole cutting template supplied with every carton

## Mounting Options

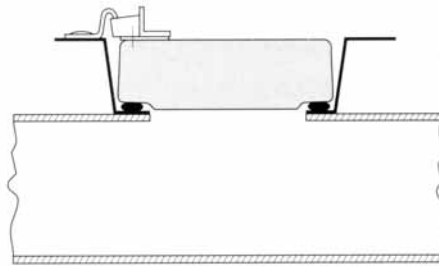
### Flush Mounting

for uninsulated duct



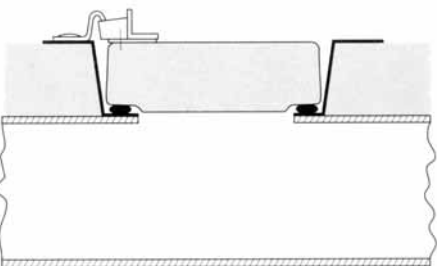
### Exterior Mounting

for uninsulated duct



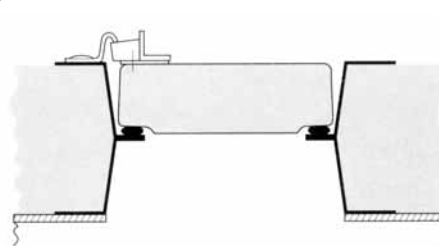
### Exterior Mounting

for duct with 25mm insulation

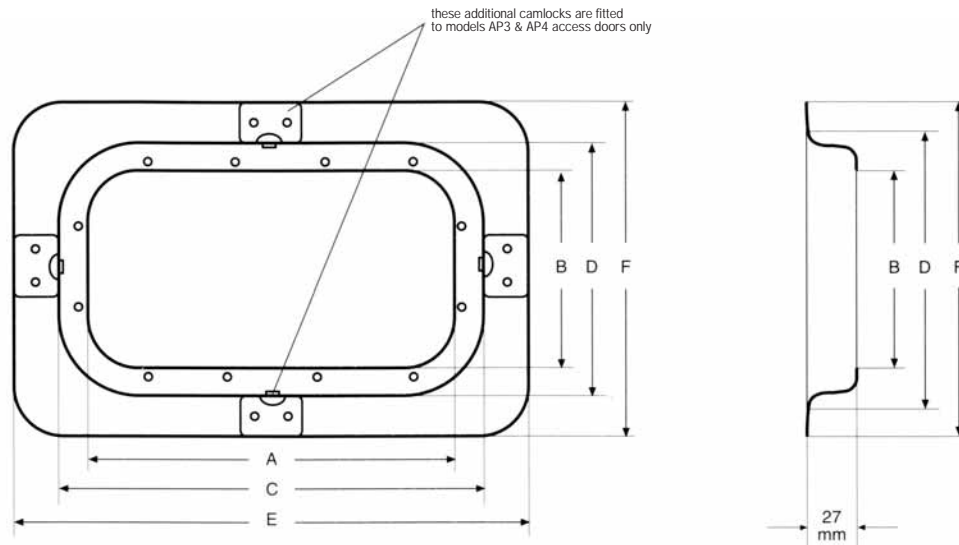


### Exterior Mounting

for duct with 50mm insulation using optional spacer frame



## Dimensional Data



	Model AP1	Model AP2	Model AP3	Model AP4
Nominal Door Size	233 x 143	362 x 227	494 x 354	647 x 496
No. Cams Per Door	2	2	4	4
A - Dimn. (mm)	205	330	460	610
B - Dimn. (mm)	115	195	320	462
C - Dimn. (mm)	237	367	500	653
D - Dimn. (mm)	147	232	360	502
E - Dimn. (mm)	281	414	552	705
F - Dimn. (mm)	191	279	412	550

## Weight and Packing Data

	Model AP1	Model AP2	Model AP3	Model AP4
Unit Weight Kg	0.83	1.60	2.95	5.72
Nos. Per Carton	10	5	5	4
Weight Per Carton Kg	8.90	8.50	15.70	24.10
Volume Per Carton M <sup>3</sup>	0.025	0.024	0.047	0.076

- A hole cutting template is included on each carton

## Options

- **Models AP1, AP2 and AP3 are available in stainless steel**
- All models can be supplied in a hinged version
- An insulation spacer frame is available for 50mm insulated ducts
- Access door saddles are available to suit installation on circular ducts

## Specification

<b>Frame</b>	Seamless one piece pressed 0.7mm galvanised mild steel
<b>Door</b>	Two section construction comprising an inner and outer panel Outer panel - 0.7mm galvanised mild steel Inner panel - 0.7mm galvanised mild steel
<b>Insulation</b>	21mm thick fire retardant thermal and acoustic insulation
<b>Gasket</b>	One piece, extruded neoprene, high compression seal with self-extinguishing fire properties
<b>Fasteners</b>	Zinc plated progressive action camlocks
<b>Safety Chain</b>	Zinc plated safety retaining chain fitted between door and frame as standard.

Independently tested and Certified by BSRIA

### Stainless Steel Access Doors

Specifications for stainless steel access doors are available on request.



### Access Doors for Circular Ducts

Access Doors are also available to fit circular ducts.

**Head Office:**  
Heath Mill Road, Wombourne,  
Wolverhampton,  
West Midlands, WV5 8AP  
Tel: (01902) 895161  
Fax: (01902) 892045

[www.hotchkissairsupply.co.uk](http://www.hotchkissairsupply.co.uk) email: [sales@hotchkissairsupply.co.uk](mailto:sales@hotchkissairsupply.co.uk)